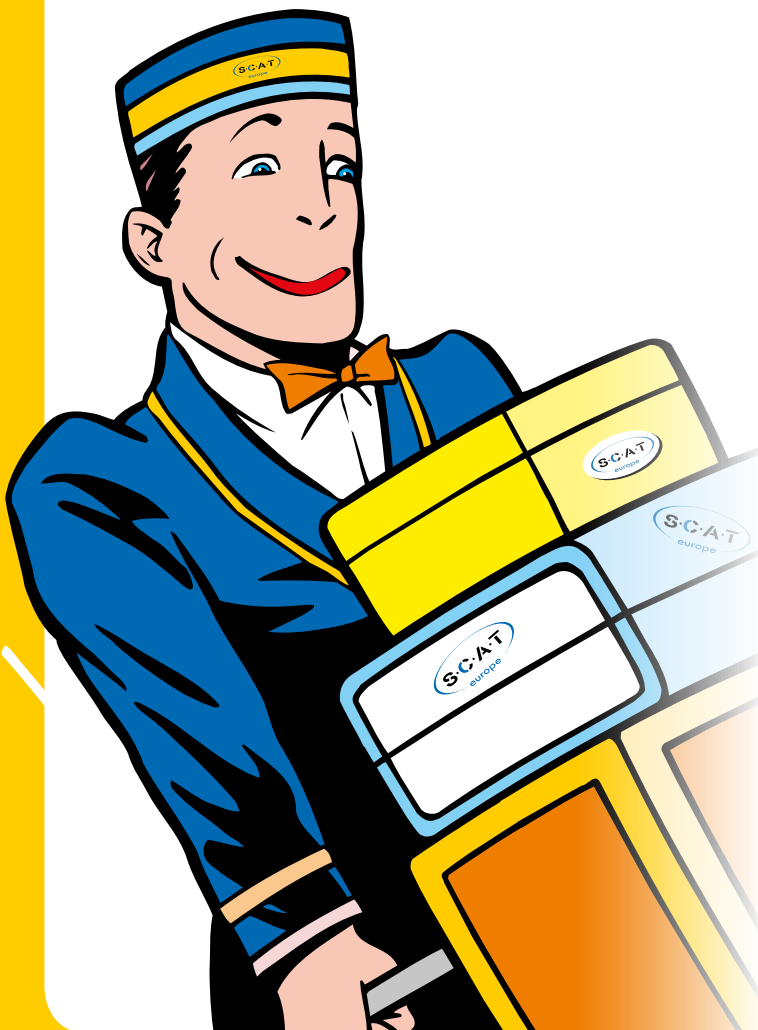


Accessories

Accessories matching with the S.C.A.T. safety system

- » We have developed a lot of products, which you need to be able to work quickly, safely and economically
- » All products are specially matched with the S.C.A.T. safety system
- » High quality accessories which are well-proven in practice



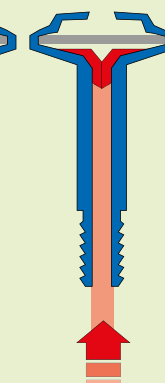
Refresh used air valves and exhaust filters regularly



Blocked dust particles



Air



Blocked Vapors / gases

Filtered exhaust air



Vapors / gases

Air valves for SafetyCaps



- » Ventilation of the bottle during operation and extraction of solvents
- » Variations for the preparative HPLC with supply rates of up to 400 ml/min.
- » Valves from fire-resistant material also available

The air valve combines valve and filter functions. As usual, ventilation occurs during extraction; harmful solvent vapors are blocked. At the same time, the valve membrane absorbs dust and contaminant particles from the incoming air. The valve also fits your existing S.C.A.T SafetyCaps without any technical modification.

Since the filter membrane absorbs contaminants from the surrounding air, it is necessary that the valve be replaced regularly in order to ensure flawless operation.

Air valves you will find on page 101.

Exhaust filters for SafetyWasteCaps



- » Central element of S.C.A.T. Europe's waste system
- » Cleans solvent vapors from the exhaust air
- » The useful change indicator is activated at the push of a button

Exhaust filters keep your workspace safe and clean. The exhaust filter is a central element of the S.C.A.T. safety system, they clean solvent vapors from the exhaust air.

Exhaust filters are permanently exposed to vapors, dust particles and pollutants. Exchange saturated filters within their service life to maintain your workspace safety. With the useful change indicator the inspection is easier than ever before.

Exhaust filters starting from page 102.



Accessories

Air valves for SafetyCaps

A 117 010

6 Months



Up to 150 ml/min.



B 112 010

6 Months



Up to 150 ml/min.



C 117 011

6 Months



Up to 400 ml/min.



Functionality of the air valve

Clearly explained on page 4.



Change every 6 months

Since the filter membrane absorbs contaminants from the surrounding air, it is necessary that the valve be replaced every 6 months in order to ensure flawless operation.

The change-advice-label

Never miss a change again! The writable change-advice-label is already installed at the air valve (blue) / included in scope of delivery.

ACCESSORIES

Fig.	Part No.	Description	Unit
A	117 010	Air valve for SafetyCaps (150 ml/min.)	1
A	197 010	Air valve for SafetyCaps (150 ml/min.)	10
A	197 050	Air valve for SafetyCaps (150 ml/min.)	50
B	112 010	Air valve for SafetyCaps, fire-resitant (150 ml/min.)	1
B	112 110	Air valve for SafetyCaps, fire-resitant (150 ml/min.)	10
C	117 011	Air valve for SafetyCaps, preparative (400 ml/min.)	1
C	197 011	Air valve for SafetyCaps, preparative (400 ml/min.)	10

Accessories Exhaust filter for SafetyWasteCaps



A 610 534


3 Months



S

B 610 535

6 Months



M

C 190 335

4 x 3 Months



Economy package S

D 190 336

3 x 6 Months



Economy package M



Change every 3 or 6 months

Exhaust filters are permanently exposed to vapors, dust particles and pollutants. Exchange saturated filters within their service life to maintain your workspace safety.

Larger exhaust filters (volume-optimized, recommended for waste containers with a volume of more than 20 liters), made from fire-resistant material and variations for barrels:

On pages 59, 60 and on the next side 103.

The change indicator

Activate the integrated change indicator easily by a single push of a button. The indicator will signalize if a change becomes necessary.

Fig.	Part No.	Filter size	Recommended for waste containers with a volume of...	Accessories	Service life	Unit
A	610 534	S (small)	up to 5 liters	Splash protection with change indicator	3 Months	1
B	610 535	M (medium)	up to 20 liters	Splash protection with change indicator	6 Months	1
C	190 335	S (small)	up to 5 liters	Splash protection with change indicator	3 Months	4
D	190 336	M (medium)	up to 20 liters	Splash protection with change indicator	6 Months	3



Accessories

more exhaust filters for SafetyWasteCaps and exhaust filters for barrels

A 112 911



3 Months



S

B 112 914



6 Months



M

C 107 986



6 Months



L

Fig.	Part No.	Filter size	Recommended for waste containers with a volume of...	Accessories	Service life	Unit
A	112 911	S (small)	up to 5 liters	Fire-resistant	3 Months	1
B	112 914	M (medium)	up to 20 liters	Fire-resistant	6 Months	1
C	107 986	L (large)	more than 20 liters	Splash protection with change indicator	6 Months	1

E 108 985



9 Months



XL

F 108 986



12 Months



XXL

Exhaust filters for barrels

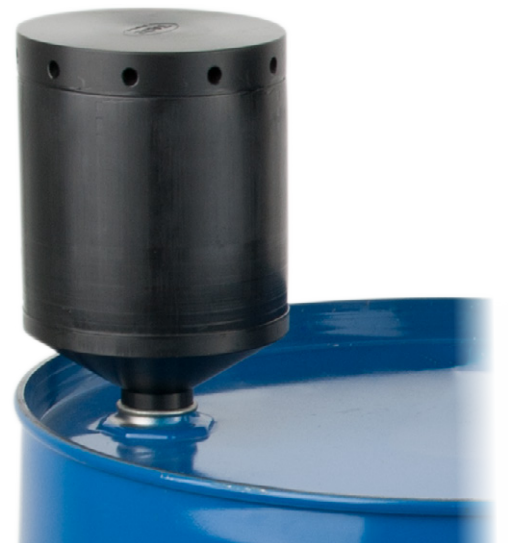


Fig.	Part No.	Filter size	Fill amount	Thread size	Recommended for barrel size	Service life	Unit
E	108 985	XL	520 g	G 3/4"	60 - 100 liters	9 Months	1
F	108 986	XXL	990 g	2"Mauser (BCS 70x6)	from 100 liters	12 Months	1
-	108 987	XXL	990 g	Double thread R 2" BSP/G2" + 2" Tri-Sure	from 100 liters	12 Months	1

Accessories Accessories for the exhaust filter connector



Space problems? Offset adapter!

Space problem in the lab? Not an issue – attach the exhaust air filter to the waste containers in any position. Practical, space-saving and flexible. With the extension **A**, you can create more freedom of movement when attaching tubes. The adapters **A B C D** can be combined with each other.

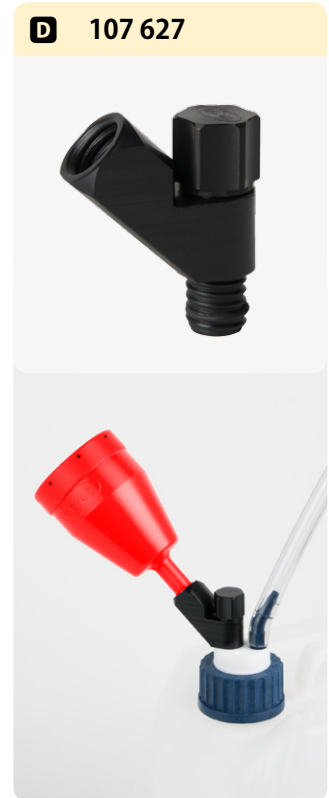
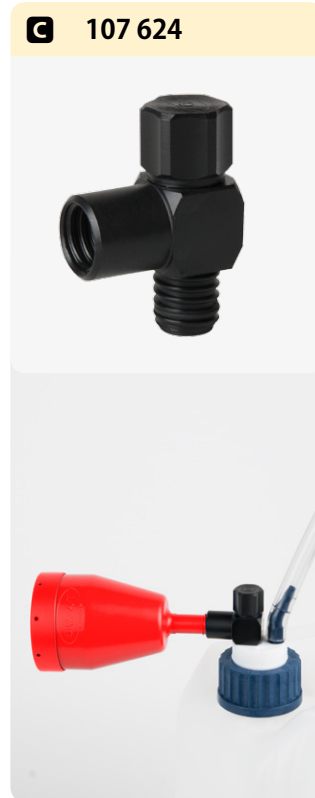
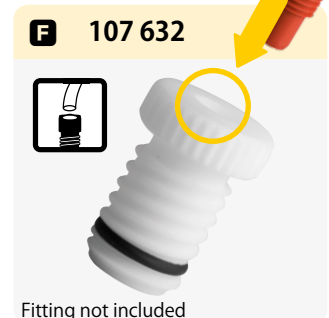


Fig.	Part No.	Description	Unit
A	107 621	Extension piece	1
B	107 622	Rigit offset adapter	1
C	107 624	90° adapter for angled connction	1
D	107 627	45° adapter for angled connction	1
E	107 620	Blind plug for exhaust filter connector	1
F	107 632	Adapter capillary connector to exhaus filter connector	1



Connectivity for HPLC capillaries



ACCESSORIES



Accessories

Fittings for the capillary connector

A 107 061



Ø 1.6 mm

B 107 059



Ø 2.3 mm

C 107 062



Ø 2.3 mm

D 107 063



Ø 3.2 mm

E 107 064



Ø 3.2 mm

F 107 065



Ø 3.2 mm

G 107 066



Ø 3.2 mm

H 160 134



I 107 041



Ø 1.6 mm

J 107 042



Ø 2.3 mm

K 107 043



Ø 3.2 mm

L 160 501



Blind plug
for capillary connector

ACCESSORIES

Fig.	Part No.	Description	Capillary size Ø OD	Material	Color	Unit
A	107 061	Fitting for capillary connector	1.6 mm	PFA	Green	5
-	107 048	Fitting for capillary connector	1.6 mm	PFA	Colorless	5
B	107 059	Fitting for capillary connector	2.3 mm	PFA	Violet	5
C	107 062	Fitting for capillary connector	2.3 mm	PFA	Grey	5
-	107 060	Fitting for capillary connector	3.2 mm	PFA	Black	5
D	107 063	Fitting for capillary connector	3.2 mm	PFA	Blue	5
E	107 064	Fitting for capillary connector	3.2 mm	PFA	Red	5
F	107 065	Fitting for capillary connector	3.2 mm	PFA	Yellow	5
G	107 066	Fitting for capillary connector	3.2 mm	PFA	Neutral	5
H	160 134	Distributor, 3-way for capillary connector	2.3 / 3.2 mm	PTFE/PFA	White/Red	1
I	107 041	Fitting for capillary connector	1.6 mm	PTFE	White	10
J	107 042	Fitting for capillary connector	2.3 mm	PTFE	White	10
K	107 043	Fitting for capillary connector	3.2 mm	PTFE	White	10
L	160 501	Blind plug for capillary connector	-	PFA	Colorless	10

Accessories

Fittings for the capillary connector



1:1 Tube fitting for the capillary connector

Connect a tube to the capillary connector?
No problem, the tube fitting 117 816 has the proper thread.

Fig.	Part No.	Description	For tube diameter	Material	Color	Unit
M	117 816	Tube fitting, straight	6 - 8 mm ID	PP	Neutral	1

» Accessories for the preparative HPLC

N 107 045

For SafetyCap:
108 032
109 032
110 032

Ø 4.76 mm
(3/16")

O 160 503

For SafetyCap:
108 032
109 032
110 032

Blind plug
Ø 4.76 mm
(3/16")

P 107 044

For SafetyCap:
107 007
107 008
107 009

Ø 6.35 mm
(1/4")



Please note:

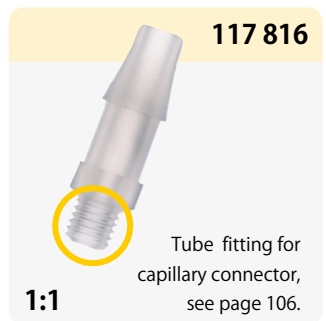
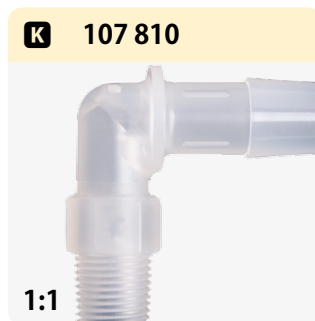
Accessories for the preparative HPLC (SafetyCaps for the preparative HPLC you will find on page 7 and 8).
These fittings only match with SafetyCaps for the preparative HPLC. They are not capable for the standard capillary connector.

Fig.	Part No.	Description	Capillar size Ø OD	Material	Color	Unit
-	107 047	Fitting for preparative HPLC	4.0 mm	PTFE	White	1
N	107 045	Fitting for preparative HPLC	4.76 mm (3/16")	PTFE	White	1
O	160 503	Blind plug for preparative HPLC	4.76 mm (3/16")	PTFE	White	10
-	160 515	Blind plug for preparative HPLC	4.76 mm (3/16")	PTFE	White	5
-	107 046	Fitting for preparative HPLC	6.0 mm	PTFE	White	1
P	107 044	Fitting for preparative HPLC	6.35 mm (1/4")	PTFE	White	1



Accessories

Tube fittings for the tube connector



Images A - K shown on a scale of 1:1

Just add the tube and identify the suitable fitting.



Fig.	Part No.	Description	For tube diameter	Material	Unit
A	117 808	Stepped fitting, curved	6.4 - 9 mm ID	PP	1
B	160 143	Tube fitting, curved	6.4 - 8 mm ID	PTFE	1
C	160 142	Tube fitting, straight	6.4 - 8 mm ID	PTFE	1
D	107 811	Tube fitting, straight	2 - 3 mm ID	PP	1
E	107 812	Tube fitting, straight	3 - 4 mm ID	PP	1
F	107 813	Tube fitting, straight	4 - 6 mm ID	PP	1
G	107 814	Tube fitting, straight	5 - 7 mm ID	PP	1
H	107 816	Tube fitting, straight	6.2 - 7.5 mm ID	PP	1
I	107 817	Tube fitting, straight	9.5 - 11 mm ID	PP	1
J	107 808	Tube fitting, angled	6.4 - 8 mm ID	PP	1
K	107 810	Tube fitting, angled	9.5 - 10 mm ID	PP	1

Accessories Adapter for the tube connector



**Flexible like no other!
The tube connector**
Our adapters offer numerous possibilities:

L 160 141



M 160 132



N 160 137



O 160 129



P 160 131



Q 160 130



R 160 128



S 117 819



T 117 821



Fig.	Part No.	Description	For tube diameter		Material	Unit
-	160 506	Blind plug for tube connector	-		PTFE	1
L	160 141	2-in-1 collector	2.3 / 3.2 mm OD		PTFE / PFA	1
-	160 144	2-in-1 collector	2.3 / 3.2 mm OD		PTFE	1
M	160 132	3-in-1 collector	2.3 / 3.2 mm OD		PTFE / PFA	1
N	160 137	8-in-1 collector	2.3 mm OD		PTFE / PFA	1
O	160 129	8-in-1 collector	2.3 mm OD (7x)	6.4 mm ID (1x)	PTFE / PFA / PP	1
P	160 131	3-in-1 collector, angled	2.3 / 3.2 mm OD		PTFE / PFA / PP	1
Q	160 130	3-in-1 collector, angled	2.3 / 3.2 mm OD (2x)	6.4 mm ID (1x)	PTFE / PFA / PP	1
R	160 128	3-in-1 collector, straight	6.4 mm ID (3x)		PTFE / PP	1
S	117 819	Tube fitting, straight, + sealing nut	8 mm ID		PTFE	1
T	117 821	Tube fitting, straight, + sealing nut	6.5 mm ID		PTFE	1

Accessories

Special adapters for further systems

A 199 010



3-way adapter for T-piece

The adapter locks the open T-piece of the HPLC system gastight and avoids the leakage of harmful vapors. Adapter, tube-piece and 3x Fittings for capillaries with \varnothing 1.6 mm outer diameter are included in the scope of delivery.

Fig. **Part No.** **Description**

A 199 010 3-way adapter for T-piece incl. tube-piece and 3x Fittings for capillaries with \varnothing 1.6 mm outer diameter

S.C.A.T. waste systems now also fit your containers of JUSTRITE®.

Proven S.C.A.T. Europe safety at Justrite® containers. Suitable adapters for CPC®-couplings.

B 107 628



C 107 617



D 107 610



Capillary connector
3.2 / 2.3 mm OD



Tube connector
6.4 mm ID



Connector for
exhaust filter

Fig.	Part No.		Capillary connector 3.2 / 2.3 mm OD	Tube connector 6.4 mm ID	Connector for exhaust filter	Material	Unit
B	107 628	4-way collector for CPC connector	3x	1x	-	PTFE / PFA / PP	1
C	107 617	Adapter S.C.A.T. exhaust filter to CPC-coupling	-	-	1x	PE-HD	1
D	107 610	Adapter S.C.A.T. exhaust filter to stainless steel coupling	-	-	1x	PE-HD	1

Access to containers during operation

Direct access to your containers

With this adapter, connecting each ND9 short thread cap of your sample bottles with the S.C.A.T. safety system is easy. This way you have access to the contents of your **supply and waste containers** even during ongoing operations, without evaporation or contamination.

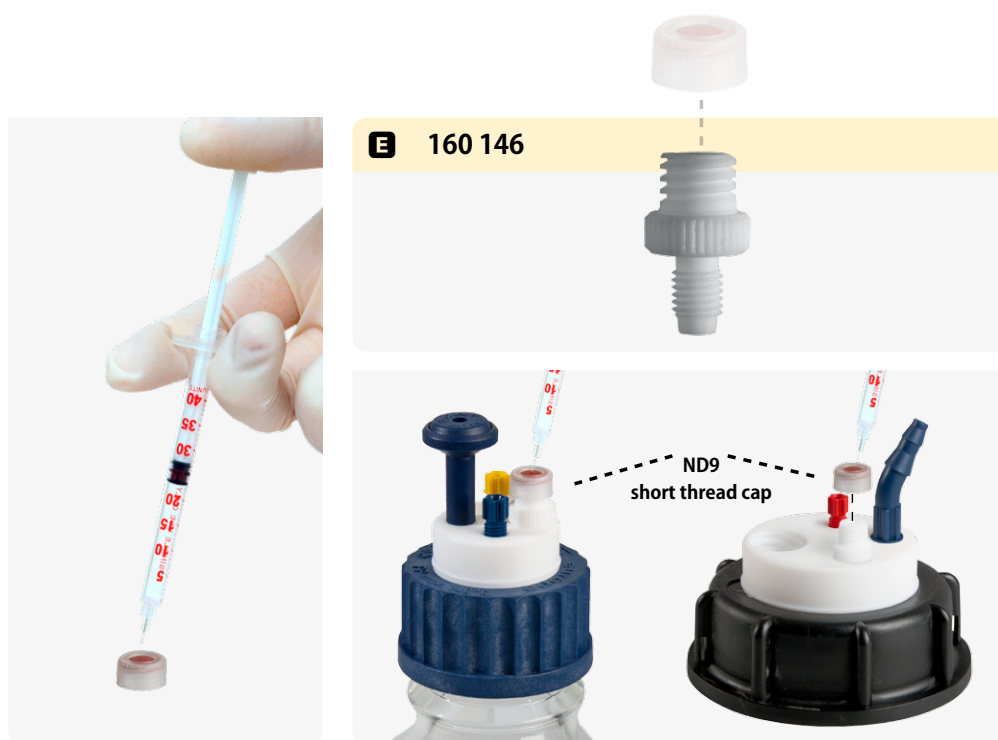
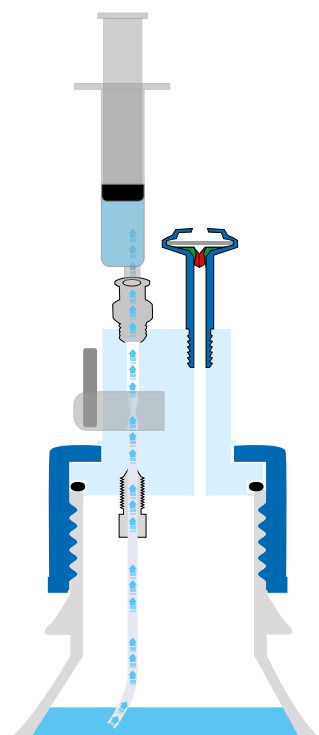


Fig.	Part No.	Description	Material	Unit
E	160 146	Adapter for septum caps with short thread ND9	PTFE	1



Luer adapter

The illustration shows solvent extraction out of a dispensing bottle which is closed through a SafetyCap with shut-off.

Fig.	Part No.	Description	Material	Unit
F	160 191	Luer adapter for the capillary connector	PP	1

Accessories

Tube connectors



Images A - L shown on a scale of 1:1.

Just add the tube and identify the size easily.

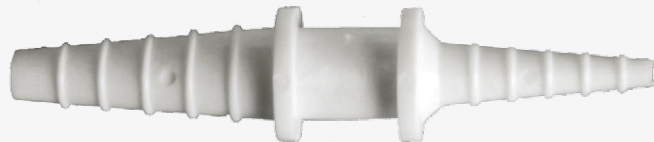
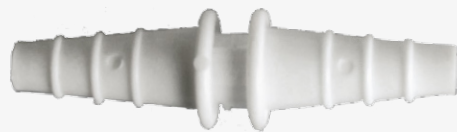
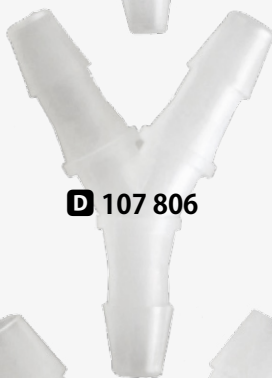


Fig.	Part No.	Description	Diameter		Material	Unit
-	107 801	Y-connector	3 mm		PP	1
A	107 802	Y-connector	4 mm		PP	1
B	107 803	Y-connector	5 mm		PP	1
C	107 804	Y-connector	6 mm		PP	1
D	107 806	Y-connector	9 mm		PP	1
E	107 807	Y-connector	11 mm		PP	1
F	107 825	Conical connector	3 - 5 mm	3 - 5 mm	PP	1
G	107 824	Conical connector	4 - 8 mm	4 - 8 mm	PP	1
H	107 823	Conical connector	7 - 10 mm	7 - 10 mm	PP	1
I	107 822	Conical connector	4 - 8 mm	8 - 12 mm	PP	1
J	107 821	Conical connector	4 - 8 mm	12 - 16 mm	PP	1
K	107 820	Conical connector	8 - 12 mm	12 - 16 mm	PP	1
L	107 826	Connector, spherical	5 - 16 mm	7.5 - 16 mm	PP	1

Accessories

CPC couplings, capillary connector



New improved system. With one „click“!

The quick disconnect couplings allow safe and quick connection of tubing and make bottle changes even easier. The bottles are rapidly disconnected with a single "click" and can be refilled at a safe location.

Thanks to the integrated valve function, the closed safety system is maintained even when a tube is disconnected.

The practical CPC quick disconnect couplings can be used for all S.C.A.T. safety systems.

A 160 189



B 160 183



C 160 179



D 160 190



E 160 180



F 160 145

S.C.A.T. capillary connector
Easy connection of capillaries.



Fig.	Part No.	Description	Capillary diameter	Material	Unit
A	160 189	Valve coupling unit set, incl. 2x 1.5 m capillary	3.2 mm OD, corresponds to 160 179 plus 160 190	PP	1
B	160 183	Valve coupling unit set, incl. 2x 1.5 m capillary	3.2 mm OD, corresponds to 160 179 plus 160 180	PP	1
C	160 179	Valve coupling unit (f), incl. 1x 1.5 m capillary	3.2 mm OD, can be used with 160 190 and 160 180	PP	1
D	160 190	Valve coupling unit (m), incl. 1x 1.5 m capillary	3.2 mm OD, can be used with 160 179	PP	1
E	160 180	Valve coupling unit (m), for capillaries	3.2 mm AD for screwing in standard connector, can be used with 160 179	PP	1
F	160 145	Capillary connector for standard capillaries with each 2x Fittings for 1.6 / 2.3 / 3.2 mm OD	1.6 / 2.3 / 3.2mm OD	PTFE	1



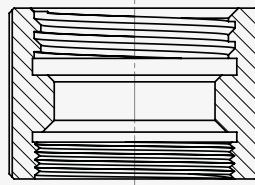
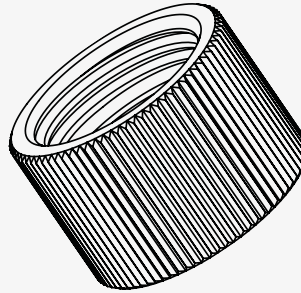
Accessories Thread adapters

If it doesn't fit - we'll make it fit.

Our numerous thread adapters are well-proven assistants through the daily working routine in laboratory and production.

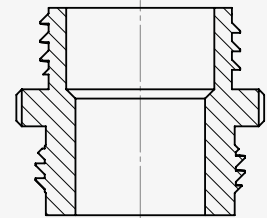
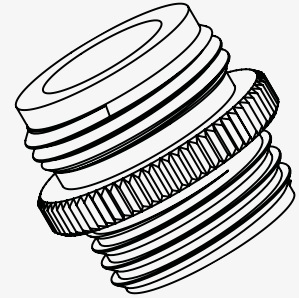
Type **A**

internal thread (f)



Type **B**

external thread (m)



Type	Part No.	Thread 1	Thread 2	Material	Color
A	107 024	S 55 (f)	R 2" fine (f)	PP	Green
A	107 082	S 60/61 (f)	2" Tri-Sure (f)	PE-HD-ec	Black
A	107 023	S 60/61 (f)	R 2" fine (f)	PP	Yellow
A	108 444	63 mm ASTM (f)	R 2" fine (f)	PP	White
A	107 025	S 70/71 (f)	R 2" fine (f)	PP	Brown

Type	Part No.	Thread 1	Thread 2	Material	Color
B	107 014	GL 45 (m)	R 2" BSP (m)	PP	Colorless
B	107 016	GL 45 (m)	R 2" BSP (m)	PTFE	White
B	107 015	GL 45 (m)	2" Tri-Sure (m)	PP	Colorless
B	107 017	GL 45 (m)	2" Tri-Sure (m)	PTFE	White
B	108 022	S 60/61 (m)	2" BSP (m)	PP	Black
B	108 029	S 60/61 (m)	2" Tri-Sure (m)	PP	Colorless
B	107 087	S 60/61 (m)	63 mm ASTM (m)	PP	Colorless
B	107 098	S 70/71 (m)	S 70/71 (m)	PTFE	White

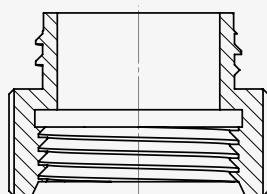
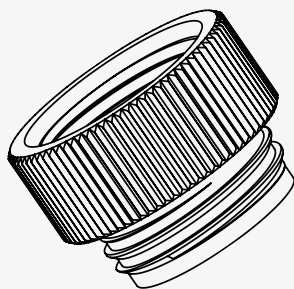
ACCESSORIES





Type G

internal/external thread (f/m)



G 108 058

The angled-adapter for canisters.

Just place your laboratory bottles on the funnel-sieve and let them drip of easily.



Type	Part No.	Thread 1	Thread 2	Material	Color
G	108 060	S 40 (m)	GL 45 (f)	PTFE	White
G	107 996	GL 45 (m)	GL 32 (f)	PP	Colorless
G	107 993	GL 45 (m)	GL 32 (f)	PTFE	White
G	107 995	GL 45 (m)	GL 38 (f)	PP	Colorless
G	107 992	GL 45 (m)	GL 38 (f)	PTFE	White
G	107 994	GL 45 (m)	S40 / GL 40 (f)	PP	Colorless
G	107 991	GL 45 (m)	S40 / GL 40 (f)	PTFE	White
G	107 093	GL 45 (m)	S 51 (f)	PP	Colorless
G	107 099	GL 45 (m)	S 55 (f)	PP	Colorless
G	107 090	GL 45 (m)	S 60/61 (f)	PP	Colorless
G	107 079	GL 45 (m)	S 70/71 (f)	PP	Colorless
G	117 030	GL 45 (m)	GPI 38-23 (f)	PTFE	White
G	107 028	GL 45 (m)	R 1 1/2" (f)	PP	Colorless
G	107 080	S 51 (m)	S 47 x 4 (f)	PP	Colorless
G	107 092	S 51 (m)	S 55 (f)	PP	Colorless
G	107 086	S 51 (m)	S 60/61 (f)	PP	Colorless
G	107 078	S 55 (m)	S40 / GL 40 (f)	PP	Colorless
G	117 091	S 55 (m)	S40 / GL 40 (f)	PTFE	White
G	107 084	S 55 (m)	S 50 (f)	PP	Colorless
G	107 095	S 55 (m)	S 51 (f)	PP	Colorless
G	117 095	S 55 (m)	S 51 (f)	PTFE	White
G	107 094	S 55 (m)	GL 45 (f)	PP	Colorless
G	117 094	S 55 (m)	GL 45 (f)	PTFE	White
G	107 089	S 55 (m)	S 60/61 (f)	PP	Colorless
G	107 076	S 55 (m)	Sakura Tissue Tek (f)	PP	Colorless
G	108 058	S 60/61 (m) angled	S 60/61 (f)	PE-HD-ec	Black
G	108 145	S 60/61 (m)	S 50 (f)	PE-HD-ec	Black
G	107 097	S 60/61 (m)	S 51 (f)	PP	Colorless
G	108 146	S 60/61 (m)	S 51 (f)	PE-HD-ec	Black
G	107 096	S 60/61 (m)	S 55 (f)	PP	Colorless
G	108 021	S 60/61 (m)	2" BSP (f)	PP	Grey
G	107 091	S 60/61 (m)	B 63 (f)	PP	Colorless
G	107 074	S 60/61 (m)	S 65 (f)	PP	Colorless
G	107 026	S 60/61 (m)	R 3" Schütz coarse (f)	PP	Grey
G	107 027	S 60/61 (m)	R 3" Werit fine (f)	PP	Colorless
G	107 088	S 65 (m)	63 mm ASTM (f)	PP	Colorless
G	108 147	S 60/61 (m)	S 71 (f)	PE-HD-ec	Black
G	107 083	S 70/71 (m)	Mason thread 70 (f)	PP	Colorless
G	107 018	S 90 (m)	S 100 / BB 70 (f)/VIR	PE-HD	Colorless
G	107 085	R 1 1/2" (m)	GL 45 (f)	PP	Colorless
G	107 021	2" Mauser coarse (m)	R 2" fine (f)	PP	Blue
G	107 022	2" Tri-Sure coarse (m)	R 2" fine (f)	PP	Orange



Accessories

Ground cables

A 108 009



B 108 011



C 117 982



D 107 938



E 108 275

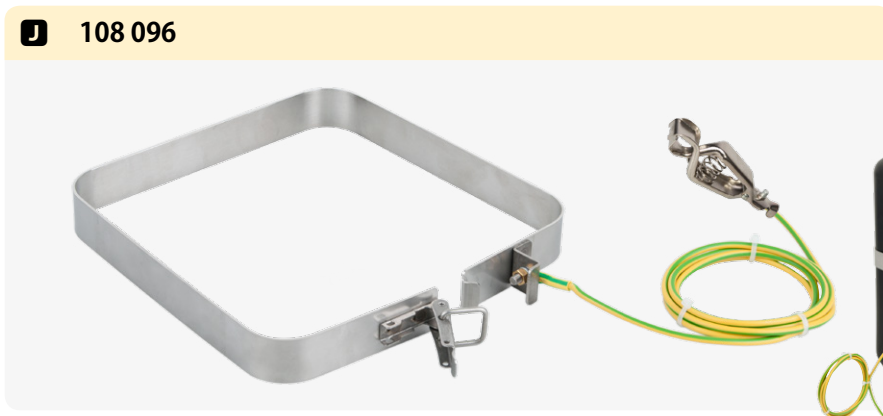
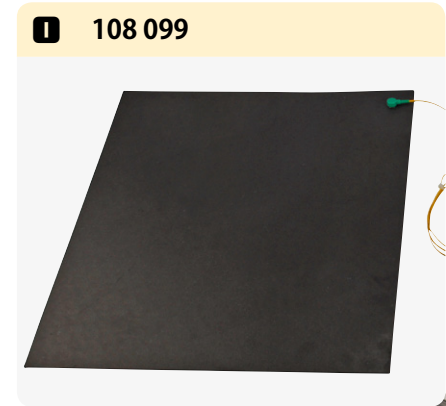


F 108 176



Fig.	Part No.	Description	Included	Length
A	108 009	Ground cable	2 clamps	1.5 m
B	108 011	Ground cable	1 clamp, 1 connection ring (Ø 10 mm)	1.5 m
C	117 982	Ground cable	1 clamp, 1 connection ring (Ø 5 mm)	1.5 m
D	107 938	Ground cable	1 clamp, 1 plug for SafetyWasteCap ground connection	1.5 m
E	108 275	Ground cable	1 press stud connector, 1 connection ring (Ø 5 mm)	1.5 m
-	108 272	Ground cable	1 mc connector, 1 connection ring (Ø 5 mm)	1.5 m
F	108 176	Ground cable	1 clamp, 1 ground clip for Ø 32 mm pipe, suitable for SymLine pipe system, incl. mounting material	3.0 m

Fig.	Part No.	Description	Unit
G	117 995	Grounding cable splitter made from brass with 1 outgoing line, 5 input ports, without cables. Mounting material is included in the scope of delivery	1
H	108 092	Earthing plug for isolated ground receptacle, 1x press stud connector, 2x 10 mm connector	1
I	108 099	Anti-static mat, conductive. With ground cable (press stud connector). Dimensions: 610 x 1220 mm	1
J	108 096	Ground strap for canisters with S90 thread, incl. ground cable with clamp. Material: Stainless steel	1

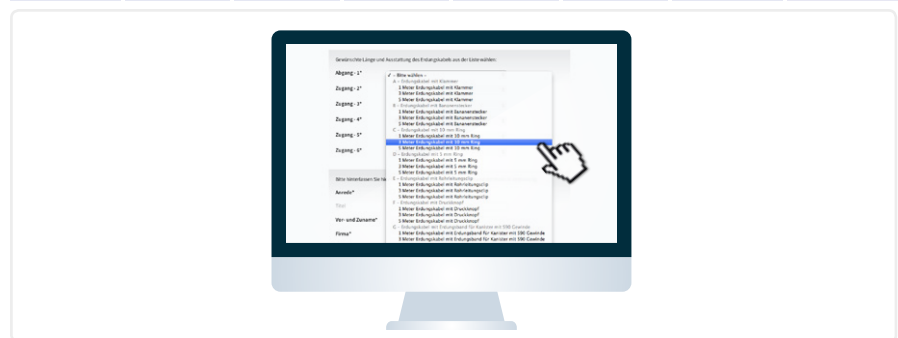


Safety at one click, with the ONLINE- CONFIGURATOR.

Our grounding cable splitter arranges a clear cable-management. The 5 input ports and the collective outgoing line can be equipped in any way. Just choose your favored cable type, define the length - done! We deliver your favored configuration.

Configure your cabling easily with just a few clicks. The grounding cable splitter will be delivered with assembled cables. Mounting material is included in the scope of delivery.

www.scat-europe.com/GROUNDING



Accessories

Tubes and capillaries

A 108 015



B 108 018



C 108 017



D 108 016



Fig.	Part No.	Description	Diameter	Length
A	108 015	Conductive plastic tube, flexible (spiral)	9 mm ID, 13 mm OD	1 m
-	108 019	Conductive plastic tube, smooth	10 mm ID, 12 mm OD	1 m
B	108 018	Conductive plastic tube, smooth	8 mm ID, 10 mm OD	1 m
C	108 017	Conductive plastic tube, smooth	6 mm ID, 8 mm OD	1 m
D	108 016	Conductive plastic tube, smooth	4 mm ID, 6 mm OD	1 m

E 461 056



F 461 055



G 461 054



H 461 053



Fig.	Part No.	Description	Unit
E	461 056	Corrugated tube, PP, for leak connection of various HPLC systems, \varnothing ID = 6.5 mm	1 m
F	461 055	Capillary PTFE, \varnothing OD = 3.2 mm, \varnothing ID = 1.6 mm	3 m
G	461 054	Capillary PTFE, \varnothing OD = 2.3 mm, \varnothing ID = 1.7 mm	3 m
H	461 053	Capillary PTFE, \varnothing OD = 1.6 mm, \varnothing ID = 1.0 mm	3 m

Accessories

Suction filters and tools

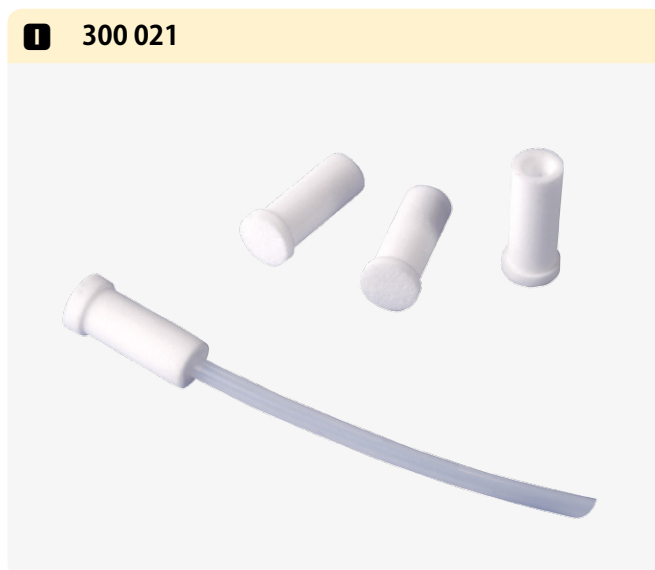


Fig.	Part No.	Description	Unit
I	300 021	Suction filter HPLC solvent filter UHMW-PE, for \varnothing 1/8" (\varnothing 3.2 mm OD) pore size 20 μ m	5 each
-	300 022	Suction filter HPLC solvent filter PFA/PTFE, for \varnothing 1/8" (\varnothing 3.2 mm OD) pore size 5 μ m	5 each

Tools

Installation wrench for fittings and capillary cutter incl. replacement blade.

Fittings and capillaries are not included in the scope of delivery.



Fig.	Part No.	Description	Form	Material	Color
B	160 500	Installation wrench, hexagonal (for PFA fittings)		Aluminium	Aluminium
C	160 499	Installation wrench, square (for PP fittings, e.g. older versions of SafetyCaps)		PP	Black
D	900 103	CleanCut capillary cutter including replacement blade	-	PP, stainless steel	Blue